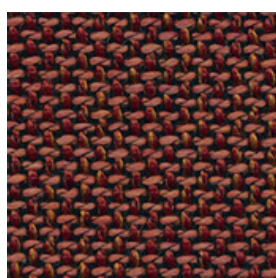
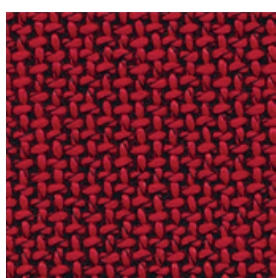


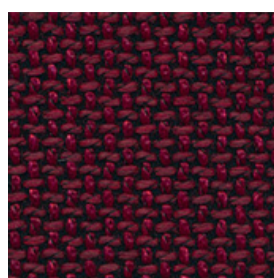
STOFF 3650 - PREISGRUPPE 36 (PG36)



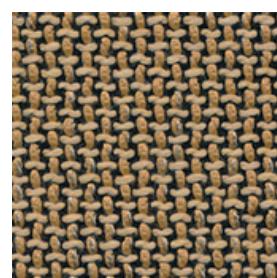
3650/13



3650/15



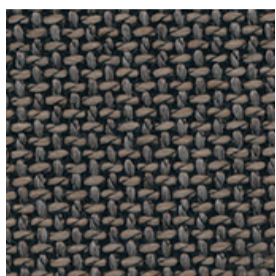
3650/16



3650/20



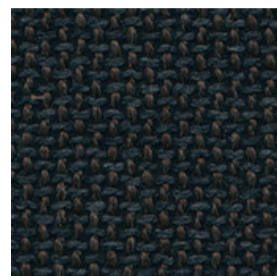
3650/21



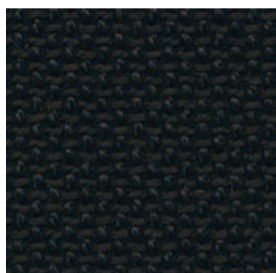
3650/23



3650/25



3650/28



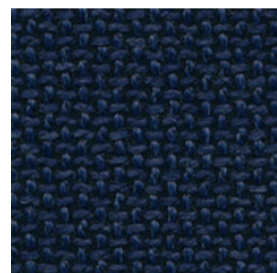
3650/29



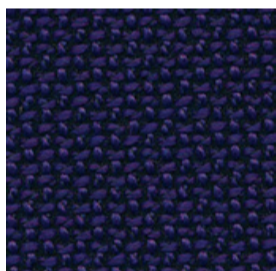
3650/35



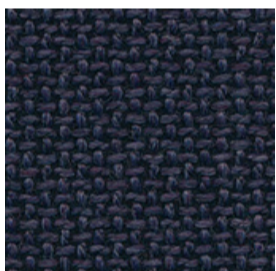
3650/40



3650/65



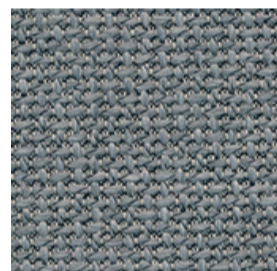
3650/83



3650/85



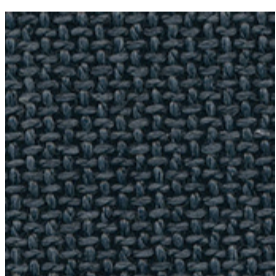
3650/90



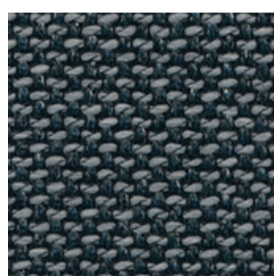
3650/93



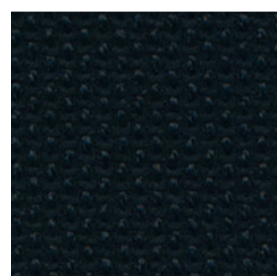
3650/95



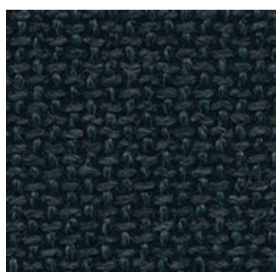
3650/96



3650/97



3650/98



3650/99



MATERIALANTEILE -

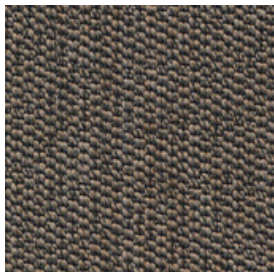
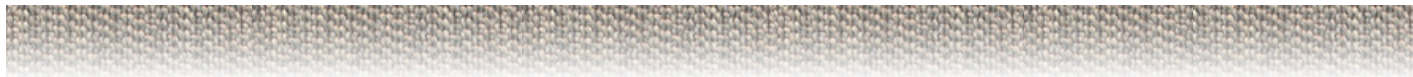
GEWEBE: 42% VISKOSE, 40% BAUMWOLLE, 18% Wolle

35.000 SCHEUERTOUREN, LICHTECHTHEIT 5-6



DIE FARBEN DER ABBILDUNGEN KÖNNEN VON DEN ORIGINALFARBEN DER STOFFE ABWEICHEN

## STOFF 3660 - PREISGRUPPE 36 (PG36)



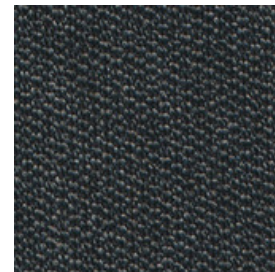
3660/25



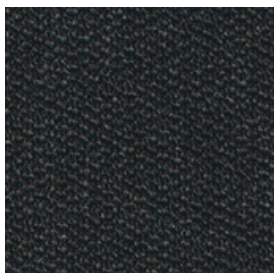
3660/28



3660/45



3660/98



3660/99



### MATERIALANTEILE -

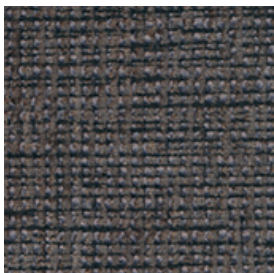
GEWEBE: 37% POLYESTER, 27% ACRYL, 20% VISKOSE, 13% WOLLE, 3% BAUMWOLLE

35.000 SCHEUERTOUREN, LICHTECHTHEIT 6-7



DIE FARBEN DER ABBILDUNGEN KÖNNEN VON DEN ORIGINALFARBEN DER STOFFE ABWEICHEN

## STOFF 3667 - PREISGRUPPE 36 (PG36)



3667/25



3667/40



3667/90



MATERIALANTEILE -

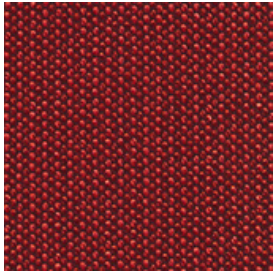
GEWEBE: 52% POLYESTER, 32% POLYESTER, 16% BAUMWOLLE

20.000 SCHEUERTOUREN, LICHTECHTHEIT 3-5, PILLING 4-5

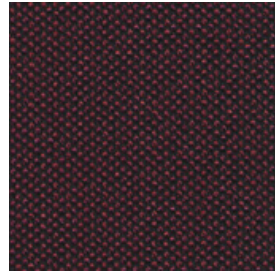


DIE FARBEN DER ABBILDUNGEN KÖNNEN VON DEN ORIGINALFARBEN DER STOFFE ABWEICHEN

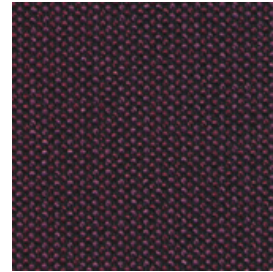
STOFF 3670 - PREISGRUPPE 36 (PG36)



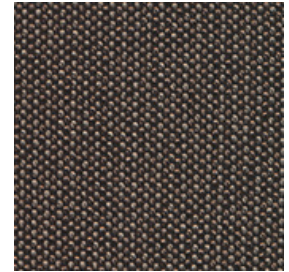
3670/14



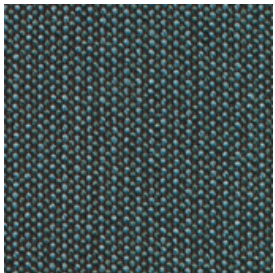
3670/16



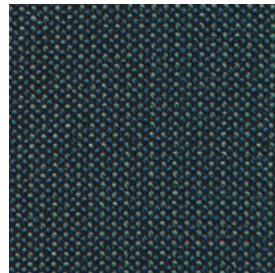
3670/18



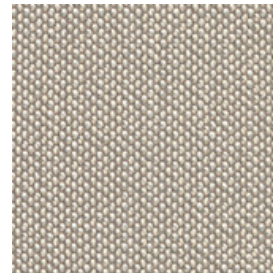
3670/25



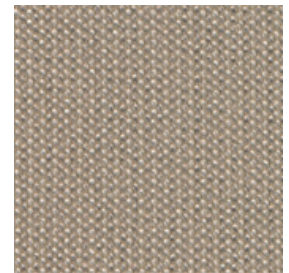
3670/30



3670/35



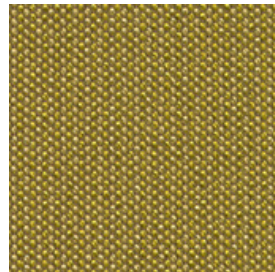
3670/40



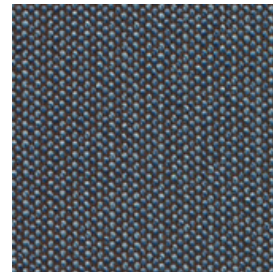
3670/45



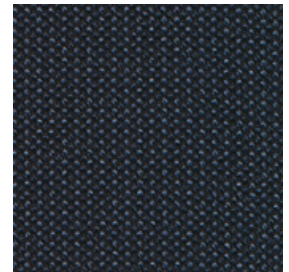
3670/69



3670/75



3670/95



3670/99

MATERIALANTEIL -

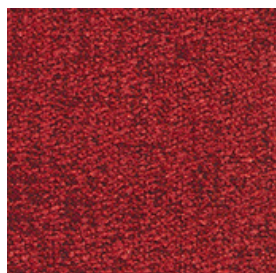
GEWEBE: 85% POLYESTER, 15% ACRYL

18.000 SCHEUERTOUREN, LICHTECHTHEIT 6



DIE FARBEN DER ABBILDUNGEN KÖNNEN VON DEN ORIGINALFARBEN DER STOFFE ABWEICHEN

STOFF 3671 - PREISGRUPPE 36 (PG36)



3671/14



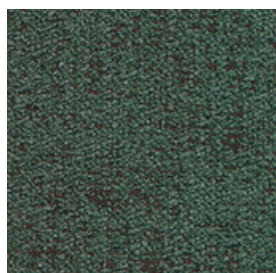
3671/16



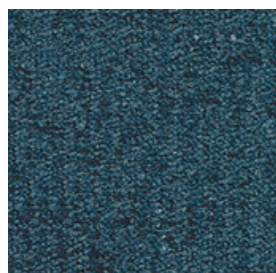
3671/18



3671/25



3671/30



3671/35



3671/40



3671/45



3671/69



3671/75



3671/90



3671/95



3671/99



MATERIALANTEILE -

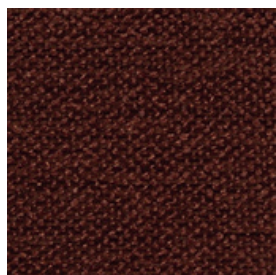
GEWEBE: 71% POLYESTER, 29% ACRYL

18.000 SCHEURTOUREN, LICHTECHT HEIT 6-7

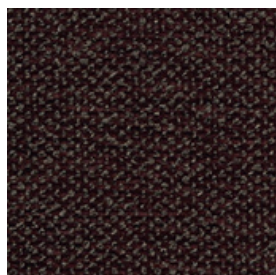


DIE FARBEN DER ABBILDUNGEN KÖNNEN VON DEN ORIGINALFARBEN DER STOFFE ABWEICHEN

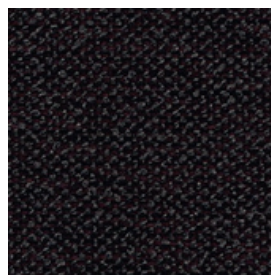
STOFF 3672 - PREISGRUPPE 36 (PG36)



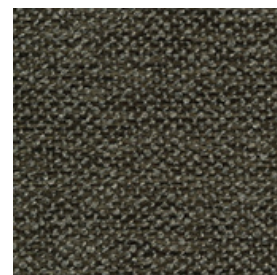
3672/14



3672/16



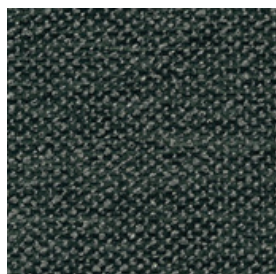
3672/18



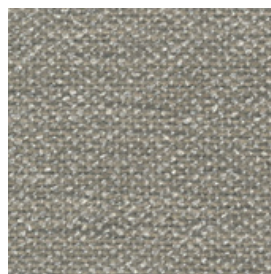
3672/20



3672/25



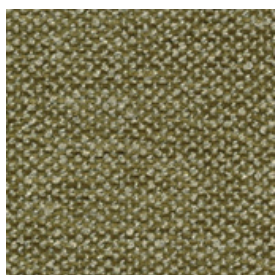
3672/30



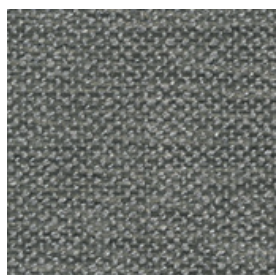
3672/45



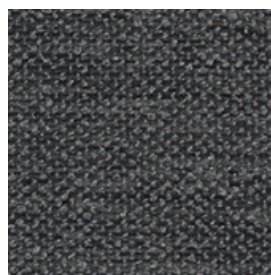
3672/69



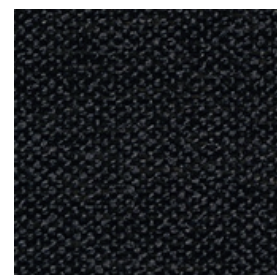
3672/75



3672/90



3672/95



3672/99



3672/35



MATERIALANTEIL -

GEWEBE: 68% POLYACRYL, 32% POLYESTER

40.000 SCHEUERTOUREN, LICHTECHTHEIT 6-7

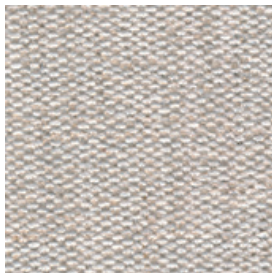


DIE FARBEN DER ABBILDUNGEN KÖNNEN VON DEN ORIGINALFARBEN DER STOFFE ABWEICHEN

## STOFF 3676 - PREISGRUPPE 36 (PG36)



3676/20



3676/40



3676/90



3676/95

MATERIALANTEIL -

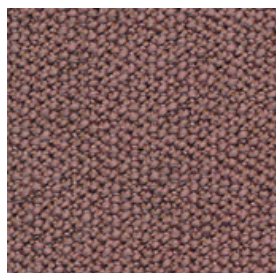
GEWEBE: 56% POLYPROPYLEN, 8% BAUMWOLLE, 36% LEINEN

58.000 SCHEUERTOUREN, LICHTECHTHEIT 5-6, PILLING 4

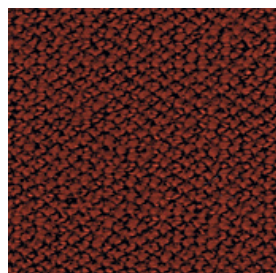


DIE FARBEN DER ABBILDUNGEN KÖNNEN VON DEN ORIGINALFARBEN DER STOFFE ABWEICHEN

STOFF 3677 - PREISGRUPPE 36 (PG36)



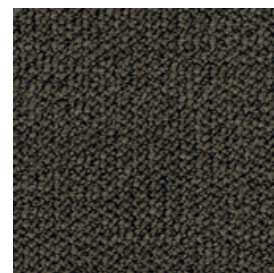
3677/11



3677/14



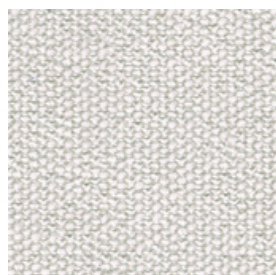
3677/20



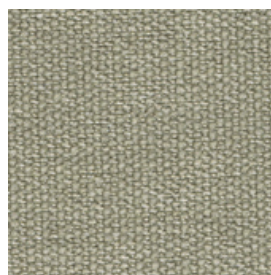
3677/25



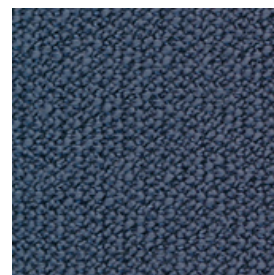
3677/30



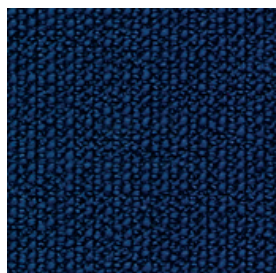
3677/40



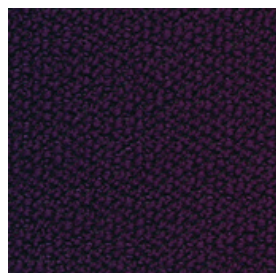
3677/45



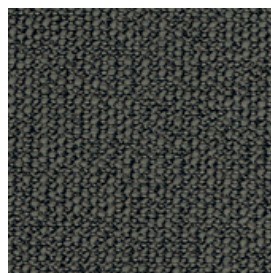
3677/60



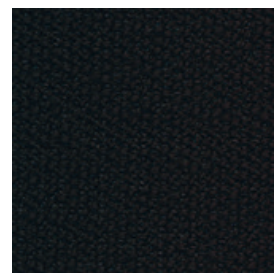
3677/65



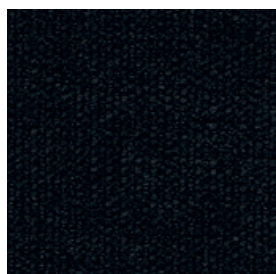
3677/85



3677/95



3677/98



3677/99



MATERIALANTEILE -

GEWEBE: 74% POLYACRYL, 26% POLYESTER

30.000 SCHEUERTOUREN, LICHTECHTHEIT 5-7, PILLING 5

DIE FARBEN DER ABBILDUNGEN KÖNNEN VON DEN ORIGINALFARBEN DER STOFFE ABWEICHEN





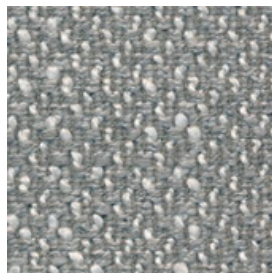
## STOFF 3682 - PREISGRUPPE 36 (PG36)



3682/20



3682/40



3682/90



### MATERIAL:

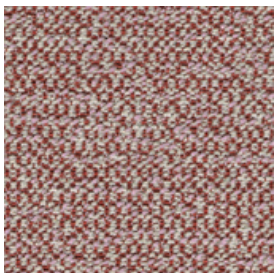
49% POLYACRYL, 21% POLYESTER, 6% BAUMWOLLE, 24% WOLLE

40.000 SCHEUERTOUREN, LICHTECHTHEIT 4-5, PILLING 3-4

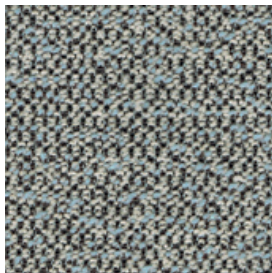


DIE FARBEN DER ABBILDUNGEN KÖNNEN VON DEN ORIGINALFARBEN DER STOFFE ABWEICHEN

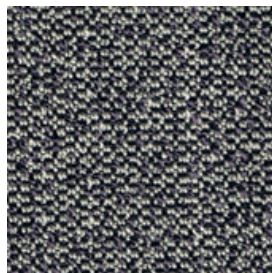
## STOFF 3683 - PREISGRUPPE 36 (PG36)



3683/13



3683/33



3683/83



MATERIAL:

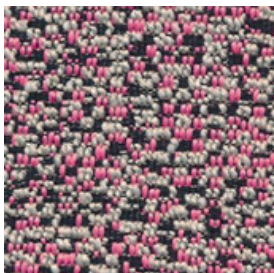
68% POLYACRYL, 32% POLYESTER

25.000 SCHEUERTOUREN, LICHTECHTHEIT 5-6, PILLING 4

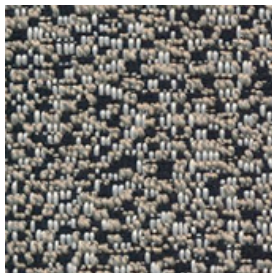


DIE FARBEN DER ABBILDUNGEN KÖNNEN VON DEN ORIGINALFARBEN DER STOFFE ABWEICHEN

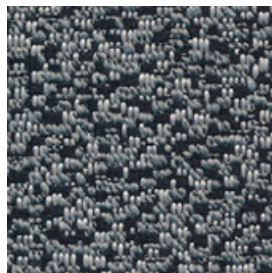
## STOFF 3684 - PREISGRUPPE 36 (PG36)



3684/11



3684/45



3684/95



MATERIAL:

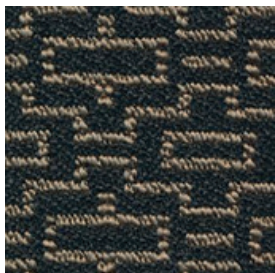
68% POLYACRYL, 32% POLYESTER

18.000 SCHEUERTOUREN, LICHTECHTHEIT 5-6, PILLING 4



DIE FARBEN DER ABBILDUNGEN KÖNNEN VON DEN ORIGINALFARBEN DER STOFFE ABWEICHEN

## STOFF 3685 - PREISGRUPPE 36 (PG36)



3685/28



3685/49



MATERIAL:

68% POLYACRYL, 32% POLYESTER

30.000 SCHEUERTOUREN, LICHTECHTHEIT 5-6, PILLING 4

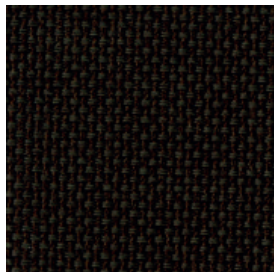


DIE FARBEN DER ABBILDUNGEN KÖNNEN VON DEN ORIGINALFARBEN DER STOFFE ABWEICHEN

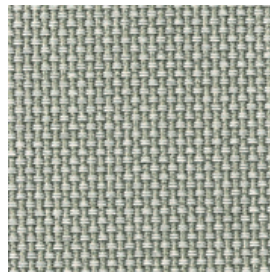
# STOFF 3687 - PREISGRUPPE 36 (PG36)



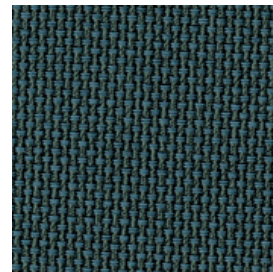
3687/22



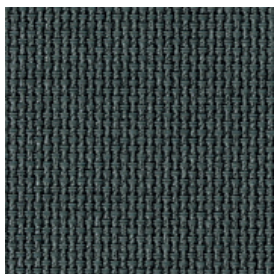
3687/25



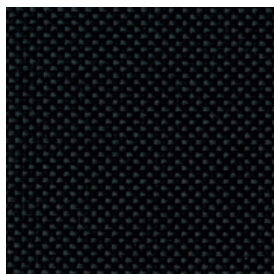
3687/42



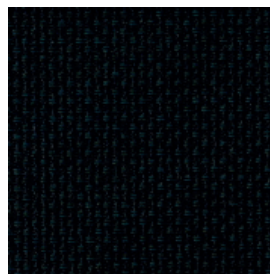
3687/60



3687/92



3687/97



3687/99



## MATERIALANTEILE -

GEWEBE: 41% POLYACRYL, 59% POLYESTER

35.000 SCHEUERTOUREN, LICHTECHTHEIT 6, PILLING 4



DIE FARBEN DER ABBILDUNGEN KÖNNEN VON DEN ORIGINALFARBEN DER STOFFE ABWEICHEN