

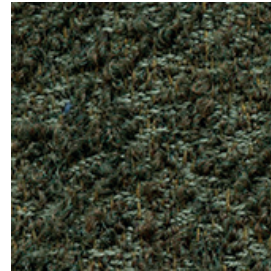
STOFF BOUCLÈ - PREISGRUPPE 6 (PG6)



BOUCLÈ 10



BOUCLÈ 40



BOUCLÈ 71



BOUCLÈ 100



BOUCLÈ 171



BOUCLÈ 172



MATERIALANTEILE -

60% WOLLE, 40% BAUMWOLLE

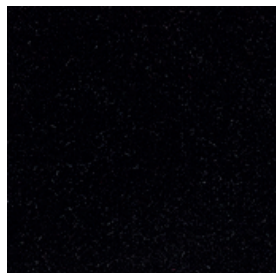
25.000 SCHEUERTOUREN, LICHTECHTHEIT 4, PILLINGBILDUNG 3-4

DIE FARBEN DER ABBILDUNGEN KÖNNEN VON DEN ORIGINALFARBEN DER STOFFE ABWEICHEN

STOFF HARALD 2 VAN KVADRAT - PREISGRUPPE 6 (PG6)



HARALD 2 182



HARALD 2 192



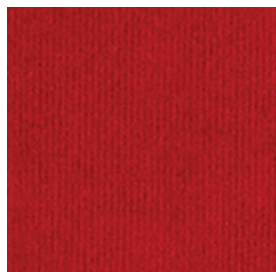
HARALD 2 212



HARALD 2 242



HARALD 2 382



HARALD 2 552



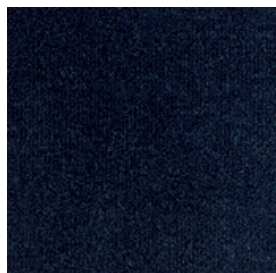
HARALD 2 582



HARALD 2 612



HARALD 2 692



HARALD 2 792



HARALD 2 952



HARALD 2 982



HARALD 2 823



HARALD 2 133



HARALD 2 443

MATERIALANTEIL -
GEWEBE: 100% BAUMWOLLE

100.000 SCHEUERTOUREN, LICHTECHTHEIT 6



DIE FARBEN DER ABBILDUNGEN KÖNNEN VON DEN ORIGINALFARBEN DER STOFFE ABWEICHEN

STOFF MOSS VON SAHCO - PREISGRUPPE 6 (PG6)



MOSS 002



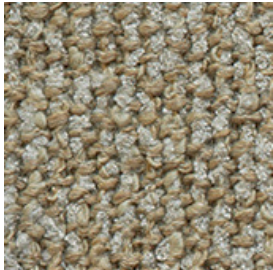
MOSS 005



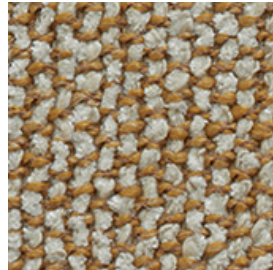
MOSS 007



MOSS 015



MOSS 017



MOSS 021



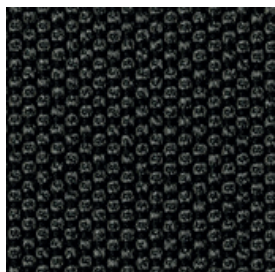
MATERIALANTEILE -

52% BAUMWOLLE, 22% VISKOSE, 14% POLYACRYL, 6% LEINEN, 3% POLYAMID, 3% POLYESTER

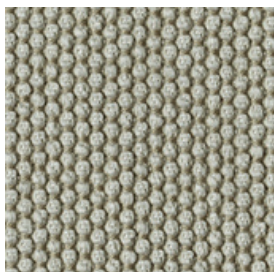
50.000 SCHEUERTOUREN, LICHTECHTHEIT 5-7, PILLINGBILDUNG 4-5

DIE FARBEN DER ABBILDUNGEN KÖNNEN VON DEN ORIGINALFARBEN DER STOFFE ABWEICHEN

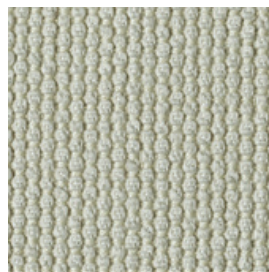
STOFF OPERA VON ROHI - PREISGRUPPE 6 (PG6)



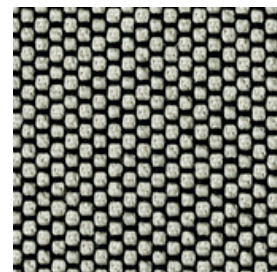
ROHI OPERA
ANTHRAZIT



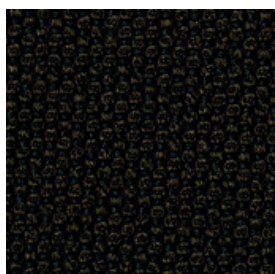
ROHI OPERA
CALLA



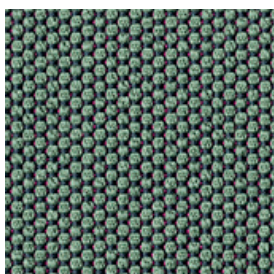
ROHI OPERA
KRISTALL



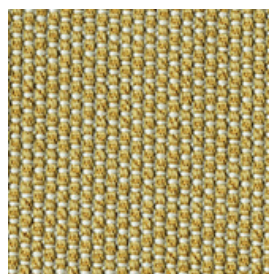
ROHI OPERA
PEPPER



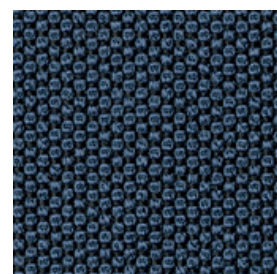
ROHI OPERA
ROSEWOOD



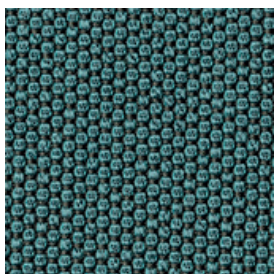
ROHI OPERA
ALOE



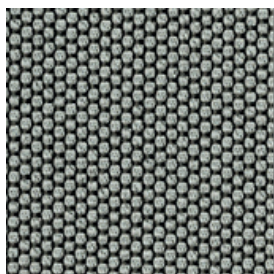
ROHI OPERA
AUREO



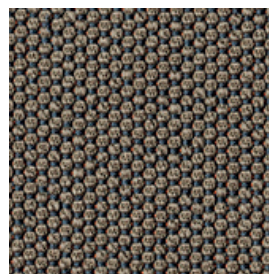
ROHI OPERA
DELFT



ROHI OPERA
DELPHI



ROHI OPERA
FANGO



ROHI OPERA
MAPLE



MATERIALANTEILE -

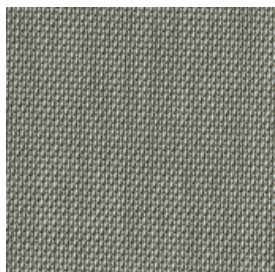
GEWEBE: 96% SCHURWOLLE, 4% POLYAMID

90.000 SCHEUERTOUREN, LICHTECHTHEIT 5-8

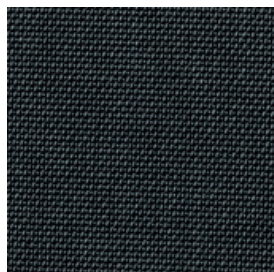


DIE FARBEN DER ABBILDUNGEN KÖNNEN VON DEN ORIGINALFARBEN DER STOFFE ABWEICHEN

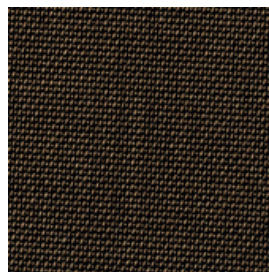
STOFF TOPIA VON ROHI - PREISGRUPPE 6 (PG6)



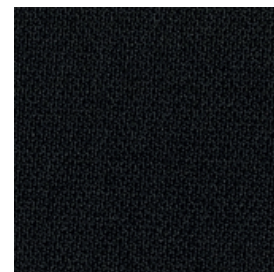
ROHI TOPIA
ANGORA



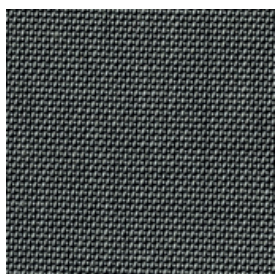
ROHI TOPIA
ANTHRAZIT



ROHI TOPIA
COFFEE



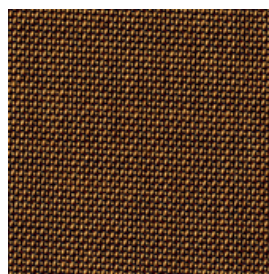
ROHI TOPIA
EBONY



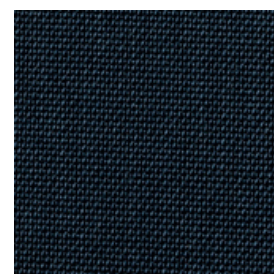
ROHI TOPIA
GRAPHIT



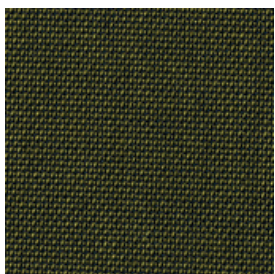
ROHI TOPIA
HEART



ROHI TOPIA
KUPFER



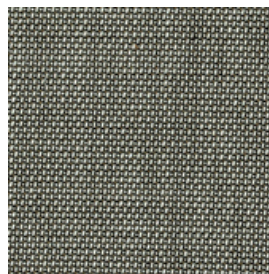
ROHI TOPIA
ORION



ROHI TOPIA
PINIE



ROHI TOPIA
SNOW



ROHI TOPIA
STONE

MATERIALANTEILE -

GEWEBE: 95% SCHURWOLLE, 5% POLYAMID

50.000 SCHEUERTOUREN, LICHTECHTHEIT 5-8

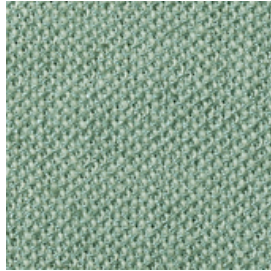


DIE FARBEN DER ABBILDUNGEN KÖNNEN VON DEN ORIGINALFARBEN DER STOFFE ABWEICHEN

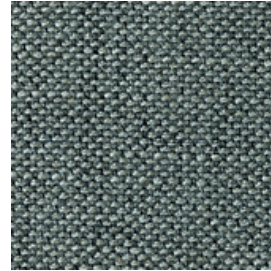
STOFF SUNNIVA BY FANNY ARONSEN - PREISGRUPPE 6 (PG6)



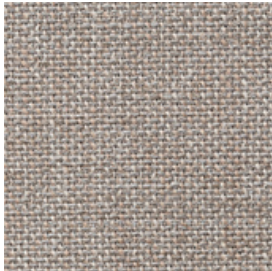
SUNNIVA 1079



SUNNIVA 132



SUNNIVA 242



SUNNIVA 717



SUNNIVA 811

MATERIALANTEILE -

GEWEBE: 8% LEINEN, 62% SCHURWOLLE, 5% POLYAMID, 25% VISCOSE

50.000 SCHEUERTOUREN, LICHTECHTHEIT 5-7



DIE FARBEN DER ABBILDUNGEN KÖNNEN VON DEN ORIGINALFARBEN DER STOFFE ABWEICHEN